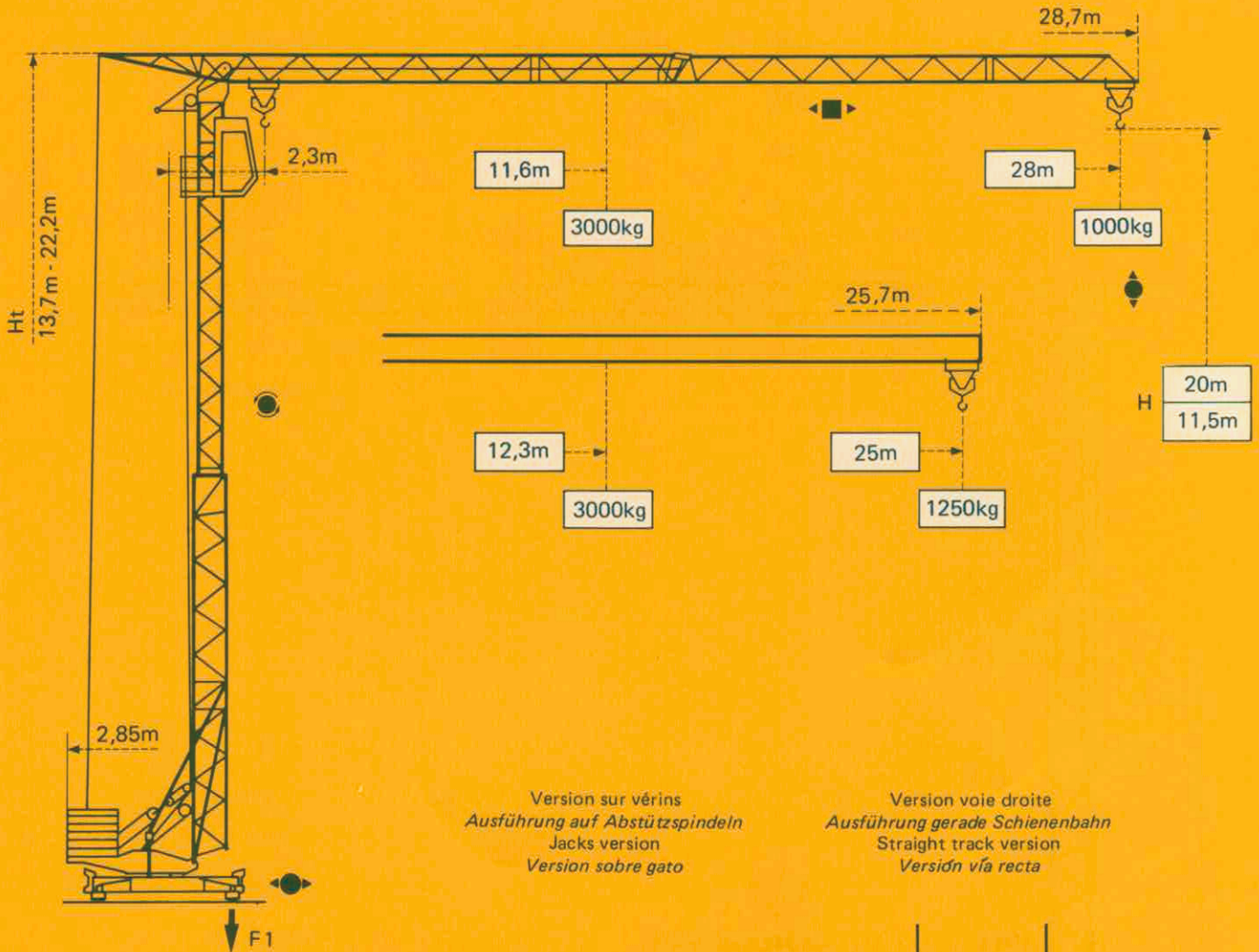


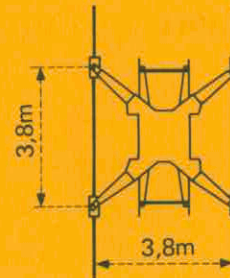
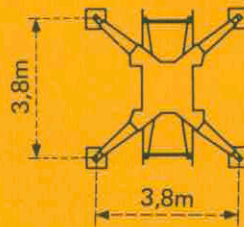
GMR 326 B

POTAIN 



Version sur vérins
Ausführung auf Abstützspindeln
Jacks version
Version sobre gato


Version voie droite
Ausführung gerade Schienenbahn
Straight track version
Versión vía recta




F1 = Réactions *Eckdrücke* Reactions *Reacciones*

F1	● 14,8t	■ 8,7t
	10,5t	


- En service
- Hors service

 A vide sans lest ni train de transport, avec flèche et hauteur maximum.


- In Betrieb
- Ausser Betrieb

 Ohne Last, Ballast und Transportachse, mit Maximalausleger und Maximalhöhe.

- In service
- Out of service

 Without load, ballast or transport axles, with maximum jib and maximum height.

- En servicio
- Fuera de servicio

 Sin carga, sin lastre, ni tren de transporte, flecha y altura maximas.

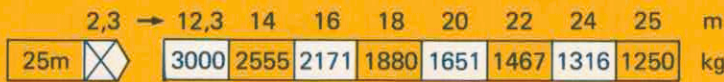
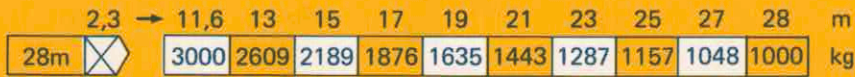
Courbes de charges

Lastkurven

Load diagrams

Curvas de cargas

 Flèche Ausleger Jib Flecha




Flèche relevée

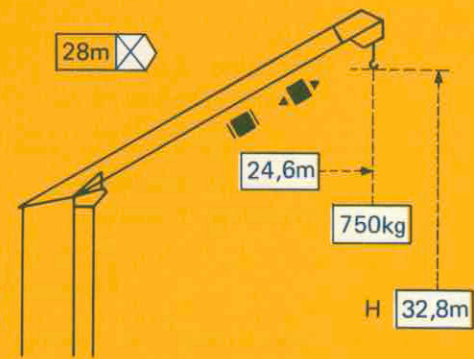
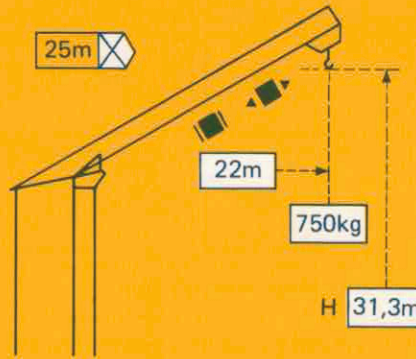
Ausleger in Steilstellung

Luffing jib

Flecha izada

 2D2V2
 Chariot bloqué (toutes positions sur flèche)
 Verriegelte Laufkatze
 Trolley locked
 Carro bloqueado

 2D1V2
 Chariot distributeur
 Verfahrbare Laufkatze
 Traversing trolley
 Carro distribuidor

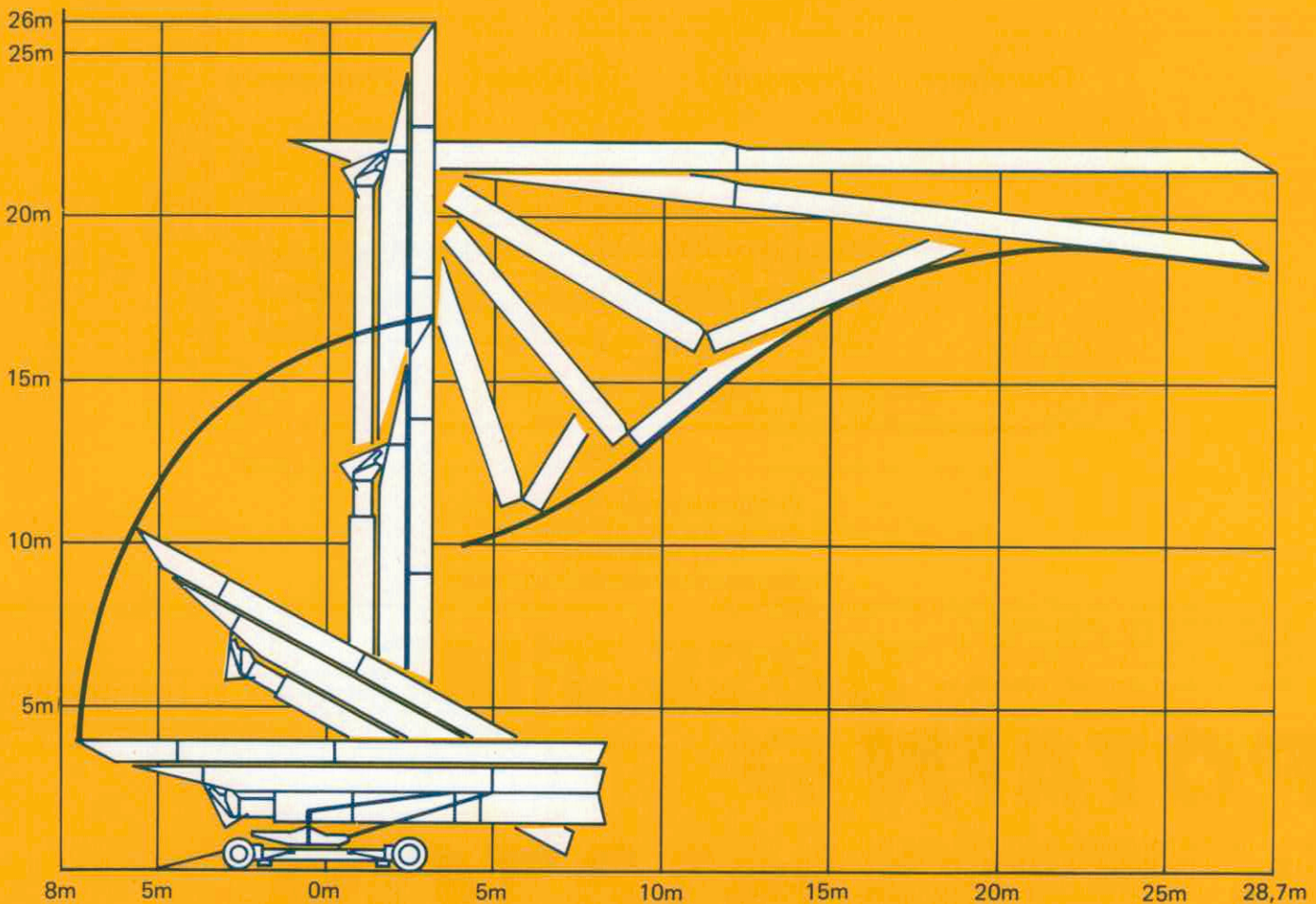


Montage

Montage

Erection

Montaje










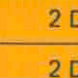






Mécanismes

Antriebe

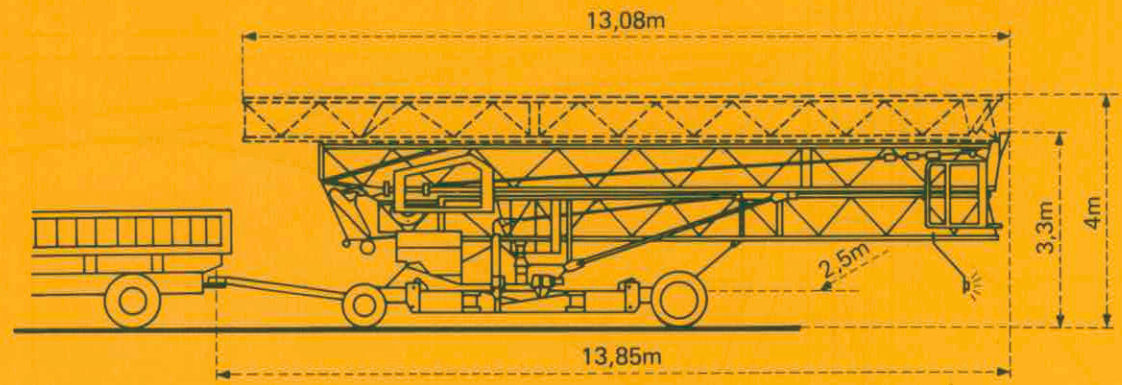
Mechanisms

Mecanismos

				m/min	kg	ch-PS hp	kW
Levage Heben Hoisting Elevación	15 TDPC 10 			6	1500	5	3,7
				22,5	1500	15	11
				45	1000		
				3	3000	5	3,7
				11,2	3000	15	11
				22,5	2000		
Distribution - <i>Katzfahren</i> Trolleying - <i>Distribución</i>		2 D1 V2 2 D2 V2		35		4	3
				14 - 42		3	2,2
Orientation - <i>Schwenken</i> Slewing - <i>Orientación</i>		RCV 20		0 → 1 tr/min U/min-rpm		3	2,2
Translation - <i>Kranfahren</i> Travelling - <i>Traslación</i>		TVD 121		25			2 x 1,4
Réseau - <i>Netzstrom</i> - Mains supply - <i>Red</i>							380V - 50 HZ
Puissance électrique nécessaire - <i>Anschlusswert</i> - Necessary electric power - <i>Potencia electrica necesaria</i>						20 KVA	
Groupe électrogène - <i>Stromaggregat</i> - Generator set - <i>Grupo electrogeno</i>						*	

*Nous consulter - *Auf Anfrage* - Consult us - *Consultarnos*

Transport Transport Transport Transporte



Version tractée derrière camion
Ausführung als LKW Anhänger
 Lorry towed version
Versión remolcable detrás de un camión

Version semi-portée : Nous consulter
Ausführung als Sattelaufleger : Auf Anfrage
 Tractor towed version : Consult us
Versión en semi-remolque : Consultarnos

NF E 52081 - 82	DIN 15018 H1 B3
-----------------	-----------------



18, rue de Charbonnières - B.P. 173 F
 69132 ECULLY Cedex - FRANCE
 Tél. : 78.33.81.81 - Télex 330 179 - Télex Export 375 213 F

POTAIN GmbH 6082 MÖRFELDEN WALLDORF
 Nordendstr. 79-87 - Postfach 420
 Tél. : 06 195 704 0 - Télex 4 1857 45

GMR 326 R

Ref. 8609 KOB 1

Modifications réservées - *Anderungen vorbehalten* - Subject to modification - *Modificaciones reservadas*
 Printed in France